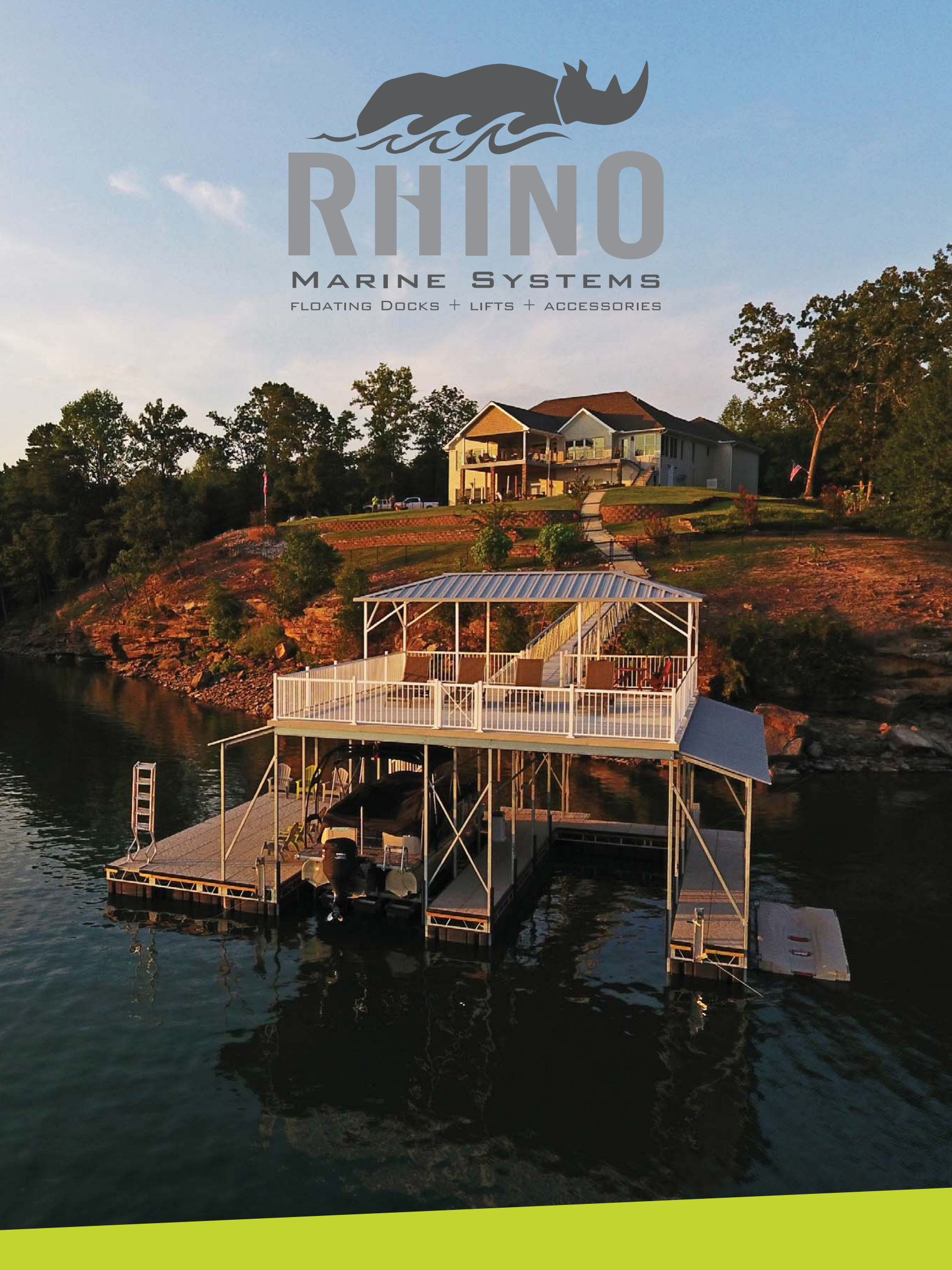




# RHINO

MARINE SYSTEMS

FLOATING DOCKS + LIFTS + ACCESSORIES





# RHINO MARINE SYSTEMS

---

## STABILITY AND LUXURY AT THE WATER'S EDGE

No matter how much time you spend on the water, you want to make the most of every hour, every season and every year. You want a solution that fits your needs and provides a stable, well-designed place for you to live life on the water. That's the reputation we've earned and the promise we've made as the industry's most trusted manufacturer of floating docks and boat lifts.

You deserve a family of products that all work together to provide a simple solution that's durable, convenient and functional. Season after season. Year after year. Our entire family of docks, lifts, floats and accessories is backed by intense engineering, along with durable and overbuilt design, to provide the most reliable, stable system on the market — all to provide you a better experience on the water's edge.



**CONTENTS**

---

- 04** RHINODOCK
- 09** ROOF OPTIONS
- 11** UPPER DECK
- 13** RHINOLIFT
- 15** L-ARM RHINOLIFT
- 17** SHALLOW WATER RHINOLIFT
- 19** FRONT MOUNT RHINOLIFT
- 21** SHOREPORT
- 23** SPECIFICATIONS

# RHINODOCK™

---

Our passion is to design, build and deliver a place for you to enjoy life on the water. RhinoDock™ floating dock system is the industry's top-of-the-line system, meaning you get complete peace of mind. Trust that your dock system is built with industry-leading strength, superior stability and exceptional design.

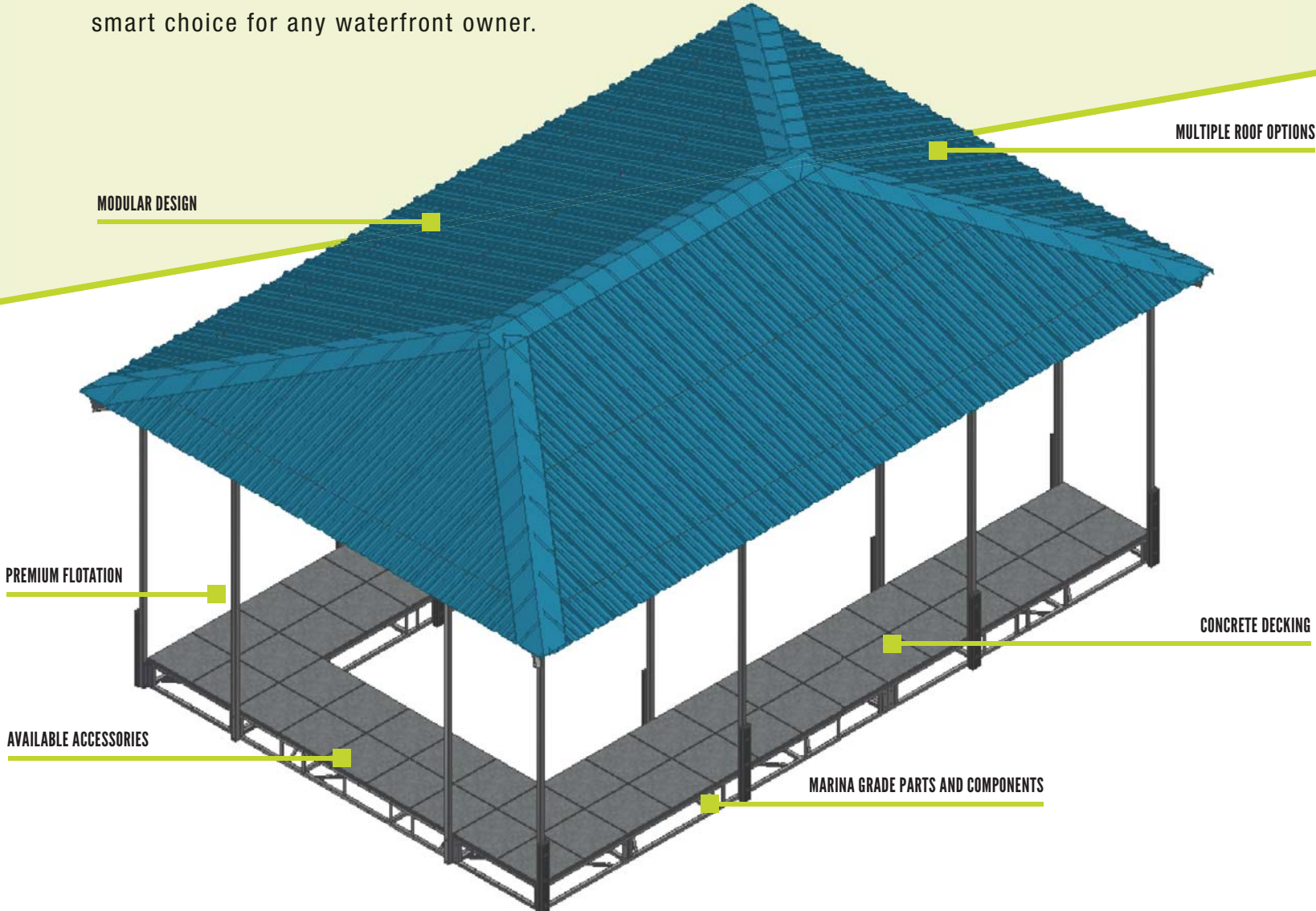






# RHINODOCK

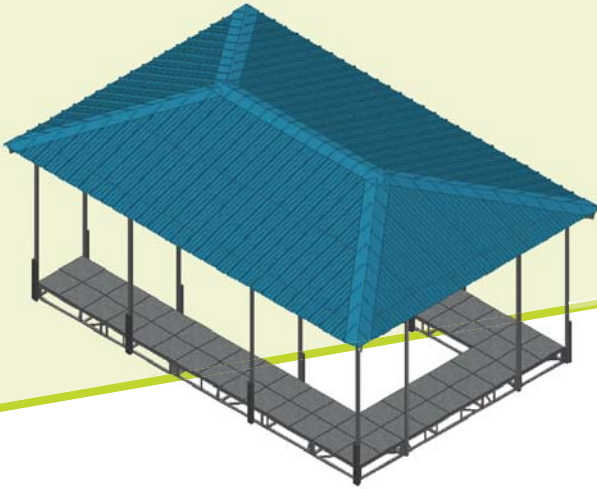
Experience the stability and strength of the industry's leading floating steel dock system. RhinoDock steel dock systems offer a level of security and stability that an aluminum floating system cannot match. With RhinoDock, your dock becomes an extension of your home — providing you with a safe, secure system for you and your family. RhinoDock's premium flotation paired with concrete decking and a marina-grade steel frame is the smart choice for any waterfront owner.





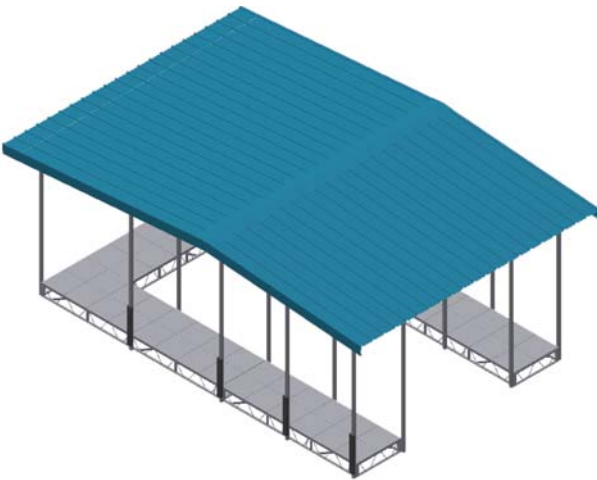
# ROOF OPTIONS

At Rhino Marine Systems, we believe in personalization and the ability to make your dock system work for your unique needs. This is why we offer multiple roof options and numerous color choices. Choose from a Gable Roof, Hip Roof or Upper Deck (with or without a roof).



## HIP ROOF

Strength and durability with aesthetic appeal — this is what you get from the RhinoDock hip roof. With a clean, beautiful design and all the strength you've come to expect from a Rhino system, this roof option provides the best in terms of both form and functionality. Add a hip roof to your traditional system, or choose an upper deck layout for the ultimate in waterfront living.



## GABLE ROOF

Our traditional gable roof design provides versatility, durability and premium watercraft protection. Our most economical option, the gable roof design can be customized to fit your specific dock layout.



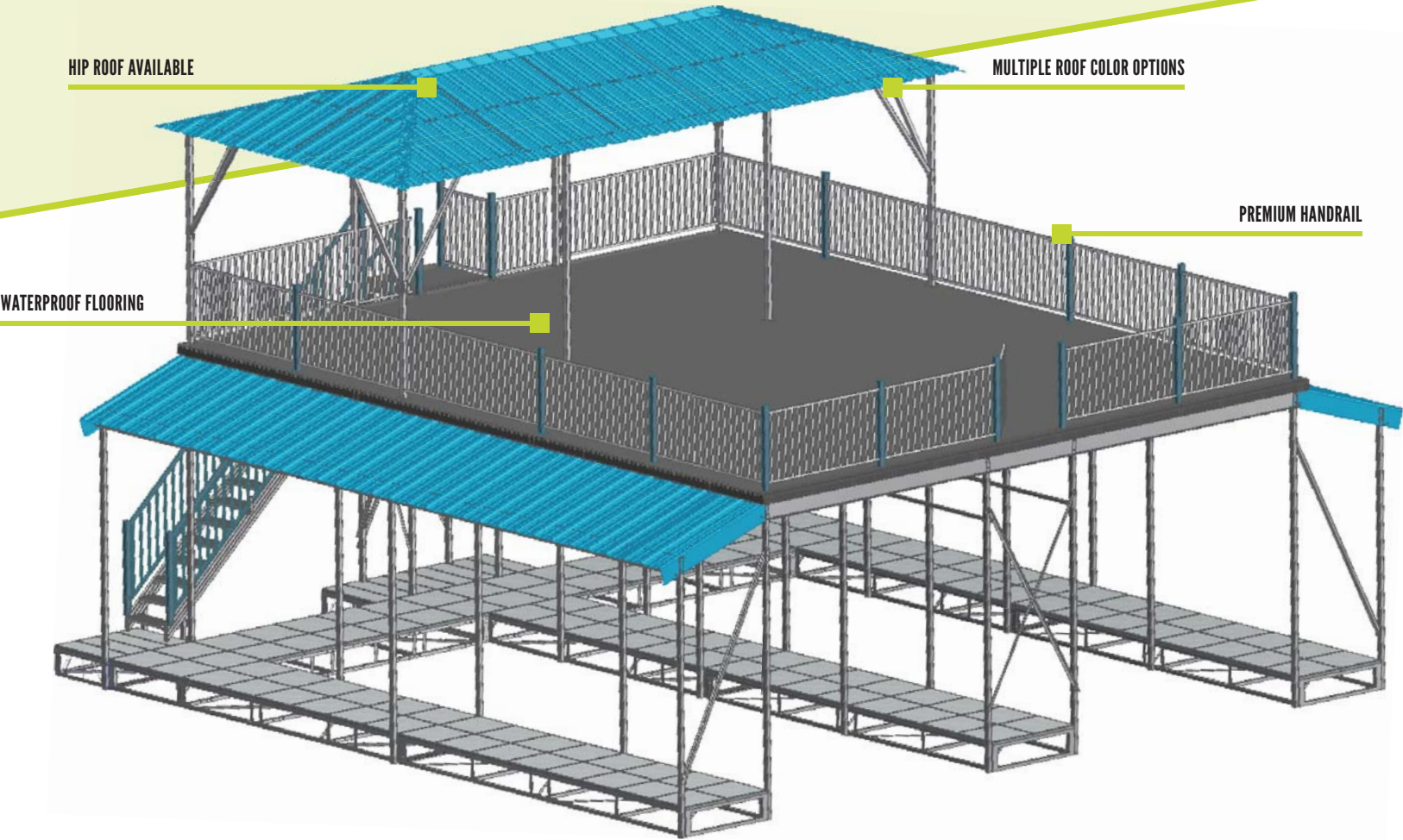
### ROOF COLOR OPTIONS

COLORS (L TO R): Rustic, Tan, Hunter, Charcoal, Gray, Light Stone, Burnished Slate, Brown, Brilliant, Polar, Hawaiian, Burgundy, Crimson, Colony, Gallery, Copper Metallic



# RHINODOCK UPPER DECK

Take your dock to the next level. We've combined the strength and stability of our galvanized steel dock system with first-class look and functionality for an industry-leading dock experience. Our aluminum upper deck features waterproof flooring and premium handrails to provide an attractive patio space and the best in outdoor, waterside living.





SHOREMASTER

Malibu WAKEWARRIOR

# RHINOLIFT

When it comes to your boat lift, you should not settle for anything less than the best.

With our galvanized-steel RhinoLifts, you get industry-leading stability, premium performance and ultimate durability. No matter your waterfront or dock setup, we have a RhinoLift designed to suit your needs. Keep your boat clean, dry and protected from the elements with our RhinoLift featuring the premium First Mate blower box.





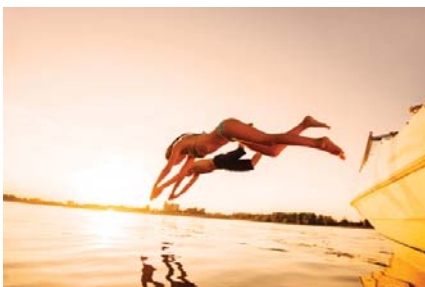
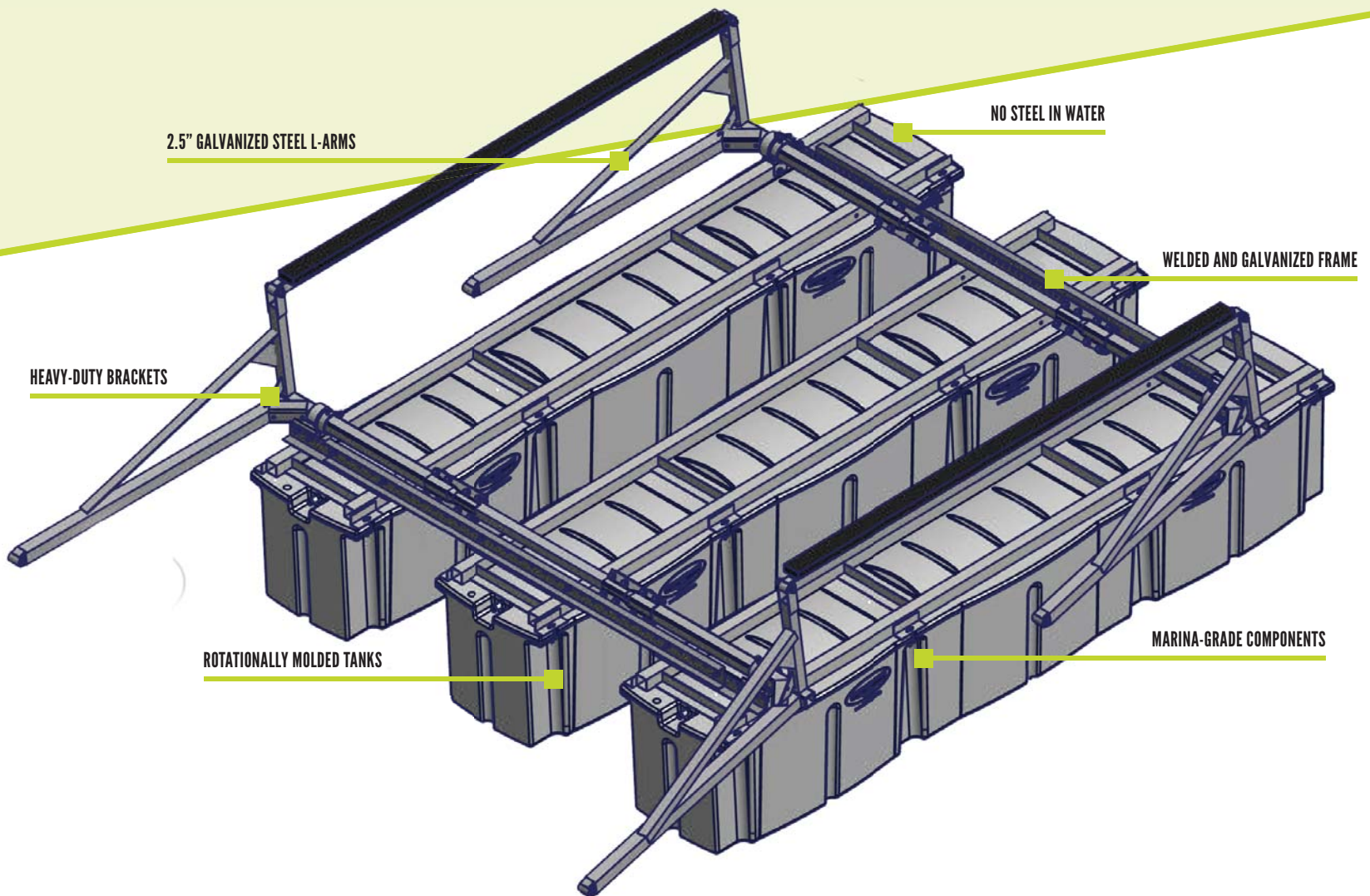
SHOREMASTER

Malibu

Malibu

# L-ARM RHINOLIFT

There is no match for Rhino stability. Originally built to withstand the brutal Lake of the Ozarks marine environment, the RhinoLift® L-Arm Lift is now the preferred choice for those who want the ultimate in strength, durability and performance. Each lift is expertly welded and hot-dip galvanized to offer the highest level of protection, safety and convenience. Plus, the First Mate control unit allows you to raise and lower your lift with the push of a button. Put the strength and simplicity of a RhinoLift boat lift into your dock and lift system.





SYLVAN

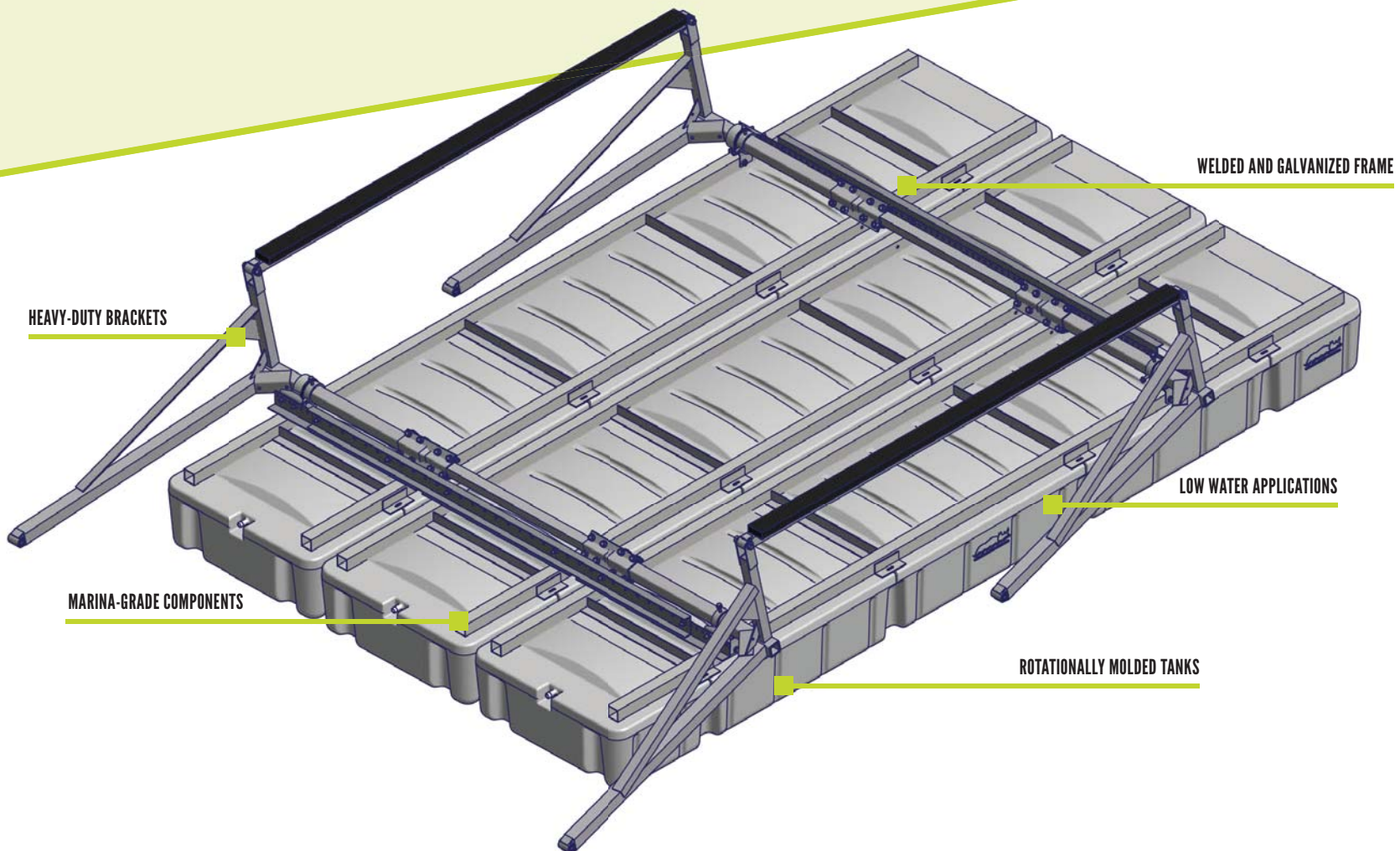


ALABAMA 2017  
MAR 35

Rhino Hoist  
MAR 35

# SHALLOW WATER RHINOLIFT

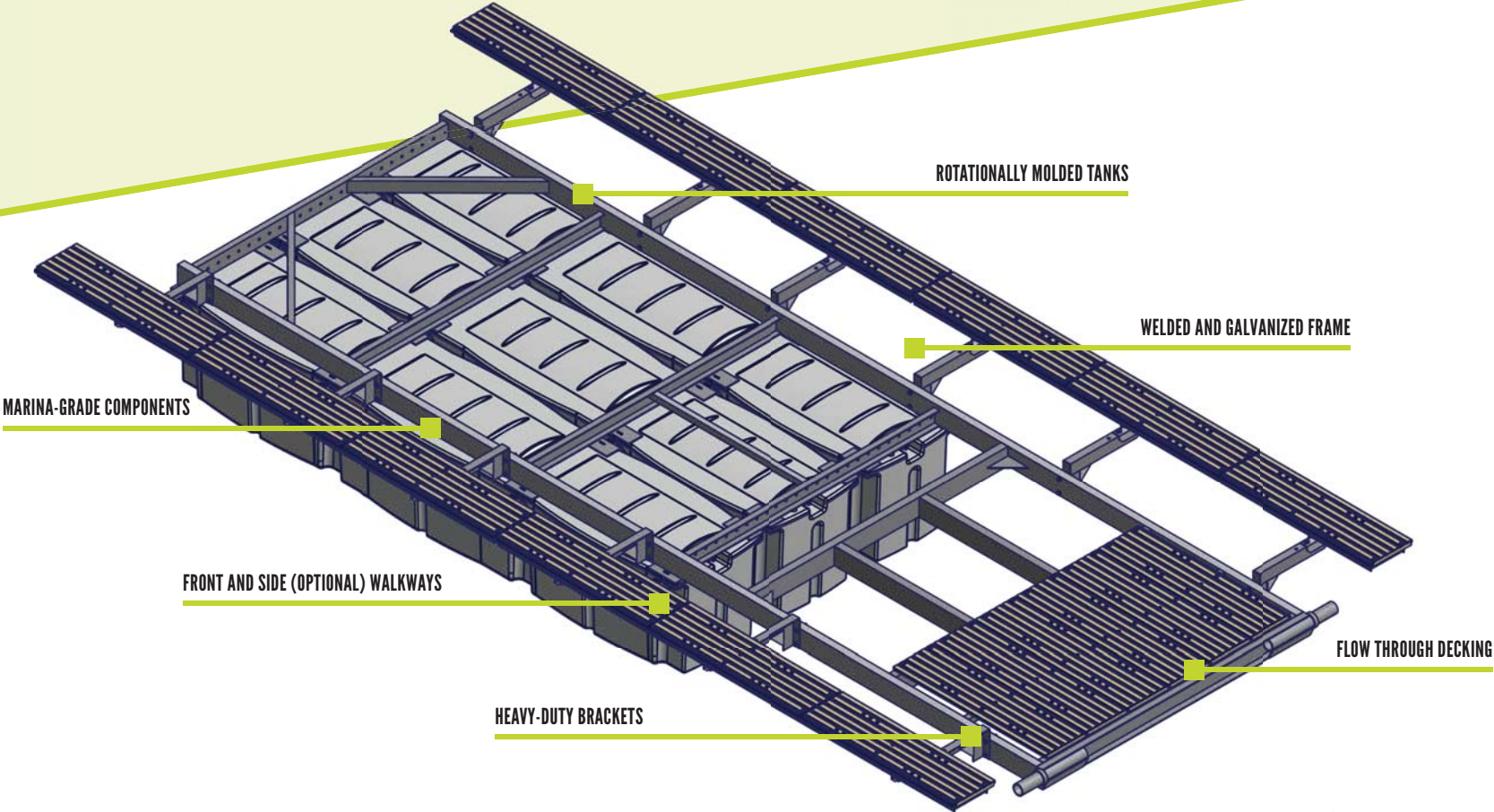
Our Shallow Water RhinoLift lift utilizes a longer, low-profile RhinoLift air tank to allow for use in shallow and fluctuating water applications. These industry-leading polyethylene tanks allow for operation in water depths as low as 22 inches (plus hull depth). Utilizing the time-tested L-Arm design, our Shallow Water Lifts are built to withstand the harshest of marine environments and provide the ultimate in strength, durability and performance. Trust the experts at RhinoLift Products and get the peace of mind the comes with over 40 years of handcrafted, expertly welded marine experience.





# FRONT MOUNT RHINOLIFT

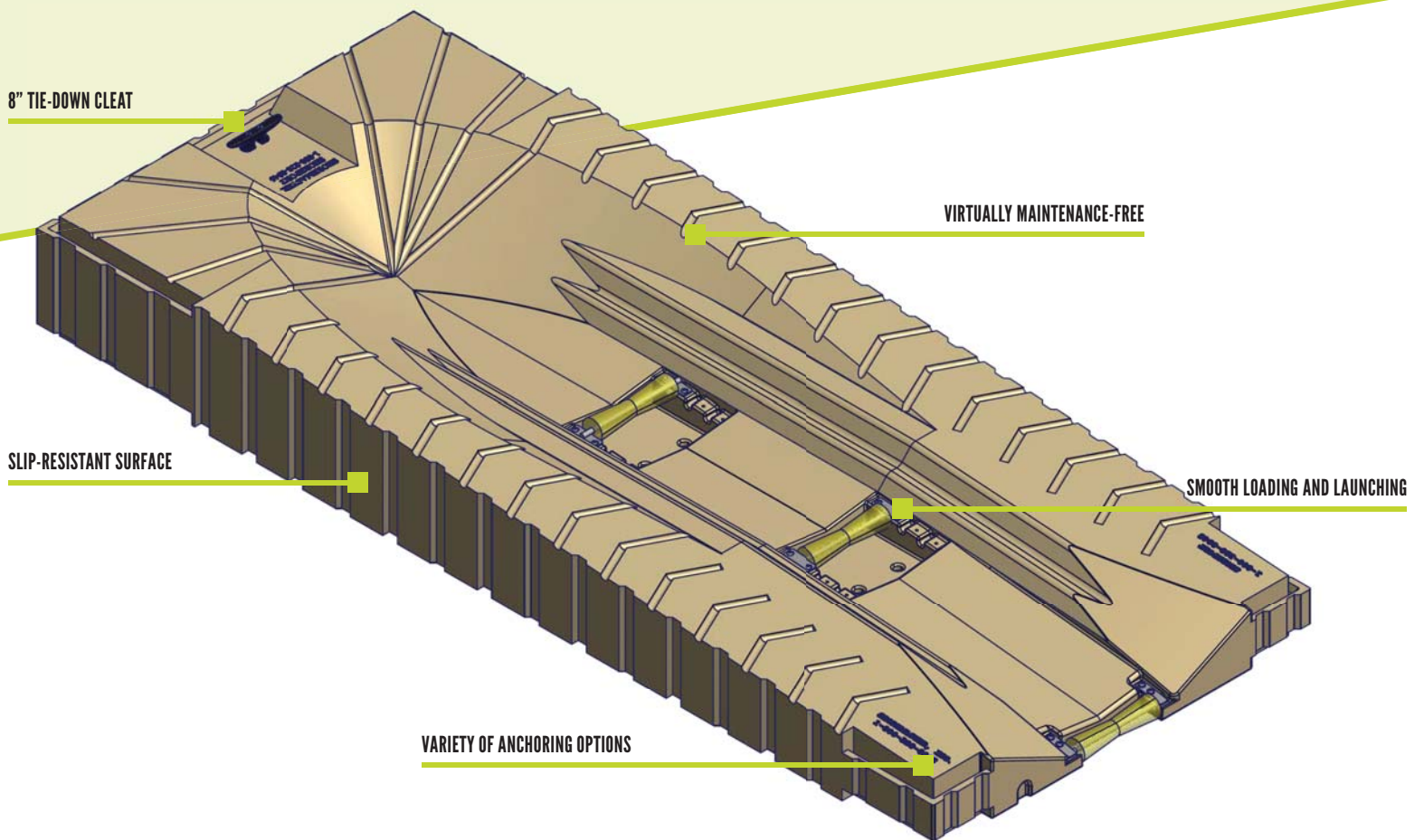
Failure is not an option. Every RhinoLift lift is forged with pride for superior stability and durability. Every component of the RhinoLift lift is marina-grade to withstand even the harshest of elements. A standard front walkway and optional side walkways provide you with safe, convenient access to your boat. Plus, with a standard First Mate control unit and optional remote, you can raise and lower your lift with the push of a button. Enjoy the peace of mind gained from trusting the industry's leading manufacturers.





# SHOREPORT

ShorePort is the quickest and most convenient way to dry-dock your jet ski after a long day on the water. ShorePort is easy to own, too — the modular, rotationally molded construction means the ShorePort requires virtually no maintenance, and its deep-textured surface drains water back to the lake or river to keep your personal watercraft clean and dry. Built to ensure that your next on-the-water adventure is always just a few steps away, the ShorePort offers PWC storage and protection with virtually no maintenance.





# SPECIFICATIONS

	MODEL	CAPACITY	SLIP WIDTH	FRAME HEIGHT W/ TANKS	OVERALL LENGTH	MIN. WATER DEPTH	BLOWER BOX						
<b>L-ARM RHINOLIFT</b> <i>p. 14-15</i>	RH 4410	4,400 lbs	9' 6" - 11' 6"	32"	192"	54"	First Mate						
	RH 4410P	4,400 lbs	9' 6" - 11' 6"	32"	192"	54"	First Mate						
	RH 4412	4,400 lbs	11' 6" - 13' 6"	32"	192"	54"	First Mate						
	RH 7210	7,200 lbs	9' 6" - 11' 6"	32"	192"	54"	First Mate						
	RH 7210P	7,200 lbs	9' 6" - 11' 6"	32"	192"	54"	First Mate						
	RH 7212	7,200 lbs	11' 6" - 13' 6"	32"	192"	54"	First Mate						
	RH 7214	7,200 lbs	13' 6" - 15' 6"	32"	192"	54"	First Mate						
	RH 7216	7,200 lbs	15' 6" - 17' 6"	32"	192"	54"	First Mate						
	RH 9012	9,000 lbs	11' 6" - 13' 6"	32"	192"	54"	First Mate	REMOTE CONTROL	ARM GUARDS	LIFT BUNKS	GUIDES/GUIDE SYSTEM	SIDE WALKWAYS	
	RH 9014	9,000 lbs	13' 6" - 15' 6"	32"	192"	54"	First Mate						
RH 9016	9,000 lbs	15' 6" - 17' 6"	32"	192"	54"	First Mate							
<b>LIFT ACCESSORIES AVAILABLE</b>								●	●	●	●		
<b>SHALLOW WATER RHINOLIFT</b> <i>p. 16-17</i>	SW 4410	4,400 lbs	9' 6" - 11' 6"	22"	216"	22" + Hull Depth	First Mate						
	SW 4412	4,400 lbs	11' 6" - 13' 6"	22"	216"	22" + Hull Depth	First Mate						
	SW 7212	7,200 lbs	11' 6" - 13' 6"	22"	216"	22" + Hull Depth	First Mate	REMOTE CONTROL	ARM GUARDS	LIFT BUNKS	GUIDES/GUIDE SYSTEM	SIDE WALKWAYS	
	SW 7214	7,200 lbs	13' 6" - 15' 6"	22"	216"	22" + Hull Depth	First Mate						
	SW 7216	7,200 lbs	15' 6" - 17' 6"	22"	216"	22" + Hull Depth	First Mate						
	<b>LIFT ACCESSORIES AVAILABLE</b>								●	●	●	●	
<b>FRONT MOUNT</b> <i>p. 18-19</i>	RH 2040-21FM	4,000 lbs		30-1/4"	252"	54"	First Mate	REMOTE CONTROL	ARM GUARDS	LIFT BUNKS	GUIDES/GUIDE SYSTEM	SIDE WALKWAYS	
	RH 4068-21FM	6,800 lbs		30-1/4'	252"	54"	First Mate						
	RH 4068-24FM	6,800 lbs		30-1/4"	288"	54"	First Mate						
	<b>LIFT ACCESSORIES AVAILABLE</b>								●	●	●	●	●

<b>SHOREPORT</b> <i>p. 20-21</i>	MODEL	CAPACITY	WIDTH	LENGTH	ACTUAL WEIGHT
	1150	1,150 - 1,450* lbs	58"	138"	260 lbs



**RHINO**  
MARINE SYSTEMS  
FLOATING DOCKS + LIFTS + ACCESSORIES

